

# Cambridge Case Study

## HVAC Warehouse

Baltimore, MD



### BUILDING DETAILS

**Size:** 18,000 sq.ft. x 28 ft. High  
**Construction:** R-16.5 Roof  
R-6.25 Walls

### OPERATING CONDITIONS

**Operating Hours:** 11 hrs/day 5 days/wk  
**Design Temperature:** 60° @ 11°  
**Thermostat Setting:** 62° occupied / 50° setback  
**Average Temperature:** 62°  
**Heating System:** Cambridge Space Heaters  
1 @ 400 MBH  
Indoor vertical mounting

### ACTUAL FUEL USE

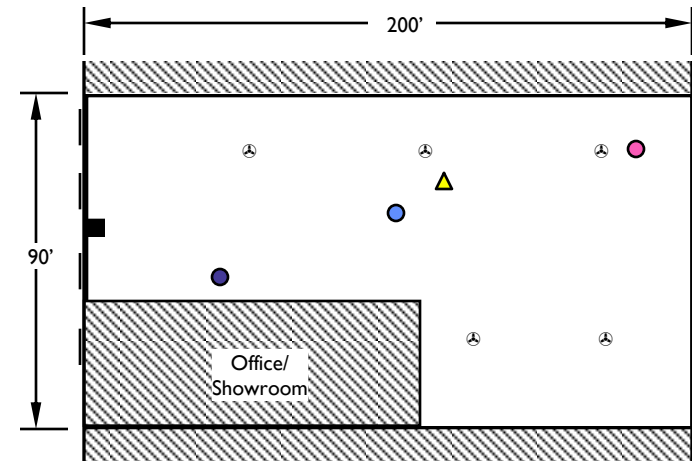
for the 2000-01 heating season (3,422 Heating Degree Days @ 62°)

**3.4 Btu / HDD / sq. ft.**

### CALCULATED OPERATING COST

for normal heating season (4,772 Heating Degree Days @ 65°)

**\$0.08 / sq.ft.** (Gas only @ \$0.50/therm)

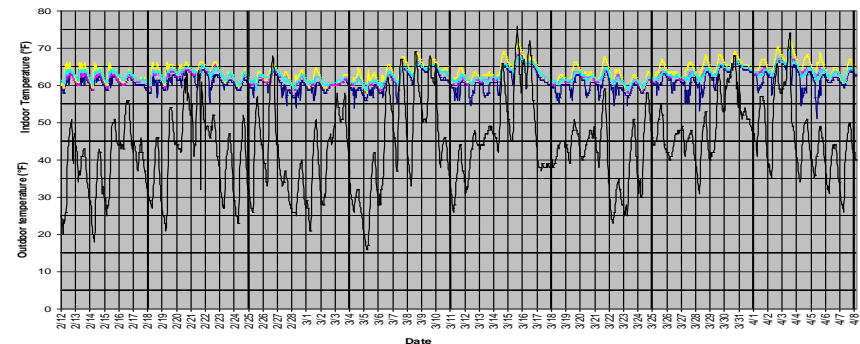


- Temperature Logger @ 5' AFF
- ▲ Temperature Logger @ 20' AFF
- Heater
- ⊗ Ceiling Fan

### DATALOGGER GRAPH

**Logging period:** 2/12/02 - 4/8/02

**Logging interval:** 30 minutes



760 Long Road Crossing Dr. • Chesterfield MO 63005  
800-899-1989 • www.cambridge-eng.com