

# Cambridge Case Study

## Distribution Center

St. Louis, MO



### BUILDING DETAILS

**Size:** 64,224 sq.ft. x 26 ft. High

**Construction:** R-14 Roof  
R-10 Walls above 8'  
R-1.5 Walls below 8'

### OPERATING CONDITIONS

**Operating Hours:** 10 hrs/day 5 days/wk

**Design Temperature:** 65°F @ 0°F

**Average Temperature:** 65°F

**Heating System:** Cambridge Space Heater  
1 @ 1200 MBH  
Roof top mounting

### ACTUAL FUEL USE

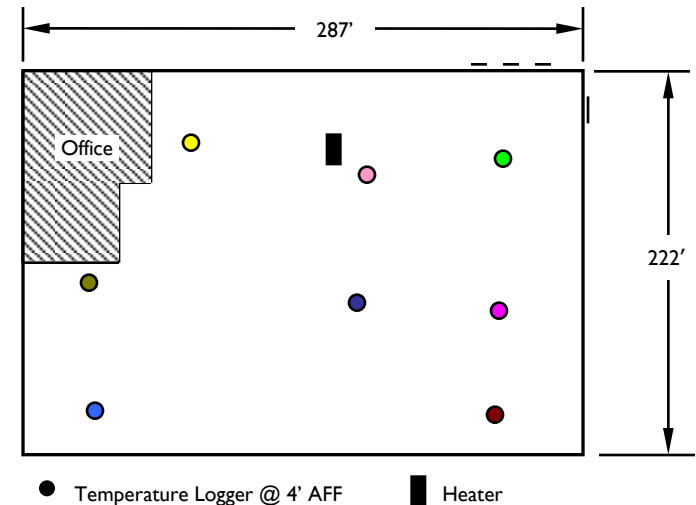
for the 1996-97 heating season (5,008 Heating Degree Days @ 65°)

**5.6 Btu / HDD / sq. ft.**

### CALCULATED OPERATING COST

for normal heating season (4,938 Heating Degree Days @ 65°)

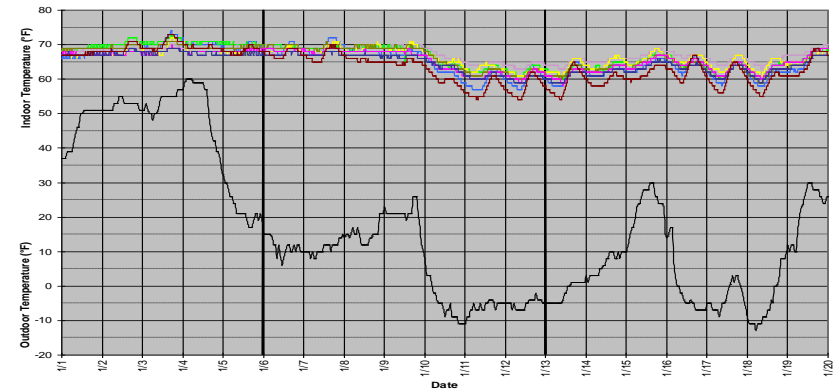
**\$0.14 / sq.ft.** (Gas only @ \$0.50/therm)



### DATALOGGER GRAPH

**Logging period:** 1/1/97 - 1/20/97

**Logging interval:** 16 minutes



760 Long Road Crossing Dr. • Chesterfield MO 63005  
800-899-1989 • www.cambridge-eng.com