

Cambridge Case Study

Distribution Center

Detroit, MI



BUILDING DETAILS

Size: 225,600 sq.ft. x 29 ft. High

Construction: R-12 Roof
R-10 Walls

OPERATING CONDITIONS

Operating Hours: 12 hrs/day 5 days/wk
4 hrs/day 2 days/wk

Design Temperature: 65° @ 0°

Average Temperature: 63°

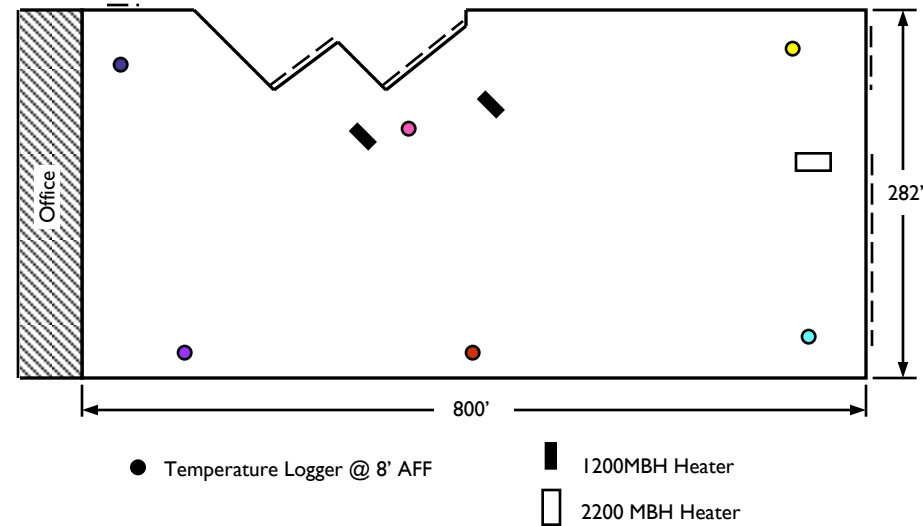
Heating System: Cambridge Space Heaters
2 @ 1200 MBH
1 @ 2200 MBH
Roof-top mounting

CALCULATED OPERATING COSTS *

for 30 year (1971-2000) average heating seasons

Indoor Temp	HDDs	@ \$0.75 / therm	@ \$1.00 / therm	@ \$1.25 / therm
50°	3,109	\$0.11 / ft ²	\$0.14 / ft ²	\$0.18 / ft ²
55°	4,080	\$0.14 / ft ²	\$0.19 / ft ²	\$0.24 / ft ²
60°	5,189	\$0.18 / ft ²	\$0.24 / ft ²	\$0.30 / ft ²
65°	6,440	\$0.22 / ft ²	\$0.30 / ft ²	\$0.37 / ft ²

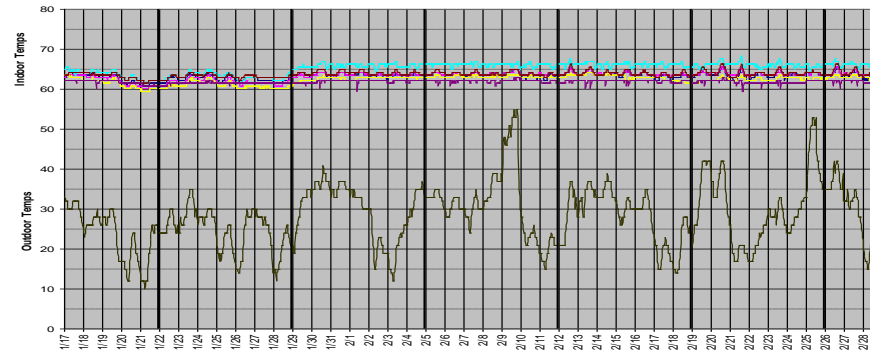
* based on actual 2000-01 consumption of 68,915 therms for 5,810 Heating Degree Days



DATALOGGER GRAPH

Logging period: 1/16/01 - 2/24/01

Logging interval: 30 minutes



760 Long Road Crossing Dr. • Chesterfield MO 63005
800-899-1989 • www.cambridge-eng.com